

WHY SCV?

Innovation Loves Company

SANTA CLARITA VALLEY
ECONOMIC DEVELOPMENT CORPORATION



AWARD WINNING

Welcome to the award-winning Santa Clarita Valley!

Best City to Live

Safest & Healthiest City

Most Business-Friendly City



**Largest City in
Los Angeles County**



GOOD LOCATION

Fulfilling the Promise of the Golden State



STILL GOLDEN

The business-friendly Santa Clarita Valley is conveniently located next to Interstate 5 and Highway 14 and is home to the 3rd largest city in Los Angeles County, the City of Santa Clarita. The SCV is a growing area encompassing 520 square miles with a population of approximately 300,000 residents.



GOOD LOCATION

Premier SoCal location

SITUATED FOR SUCCESS

Just 30 miles north of downtown Los Angeles, the Santa Clarita Valley enjoys access to 23 interstate and local highways and enjoys easy access to LAX, Burbank Hollywood Airport, and the Ports of Los Angeles and Long Beach. The SCV is ideally situated to help companies grow.



GOOD LOCATION

Home to LA County's most business-friendly city

BUSINESS FRIENDLY

Santa Clarita is recognized as LA County's Most Business-Friendly location

LIVE • WORK • PLAY

No other city offers such a uniquely favorable combination of factors that allow you to live, work and play right outside your doorstep



SAFEST CITY

The City of Santa Clarita consistently ranks as one of the safest cities of its size in the nation

CITY OF THE FUTURE

fDi Magazine recognizes the City of Santa Clarita as a “City of the Future” for foreign investment



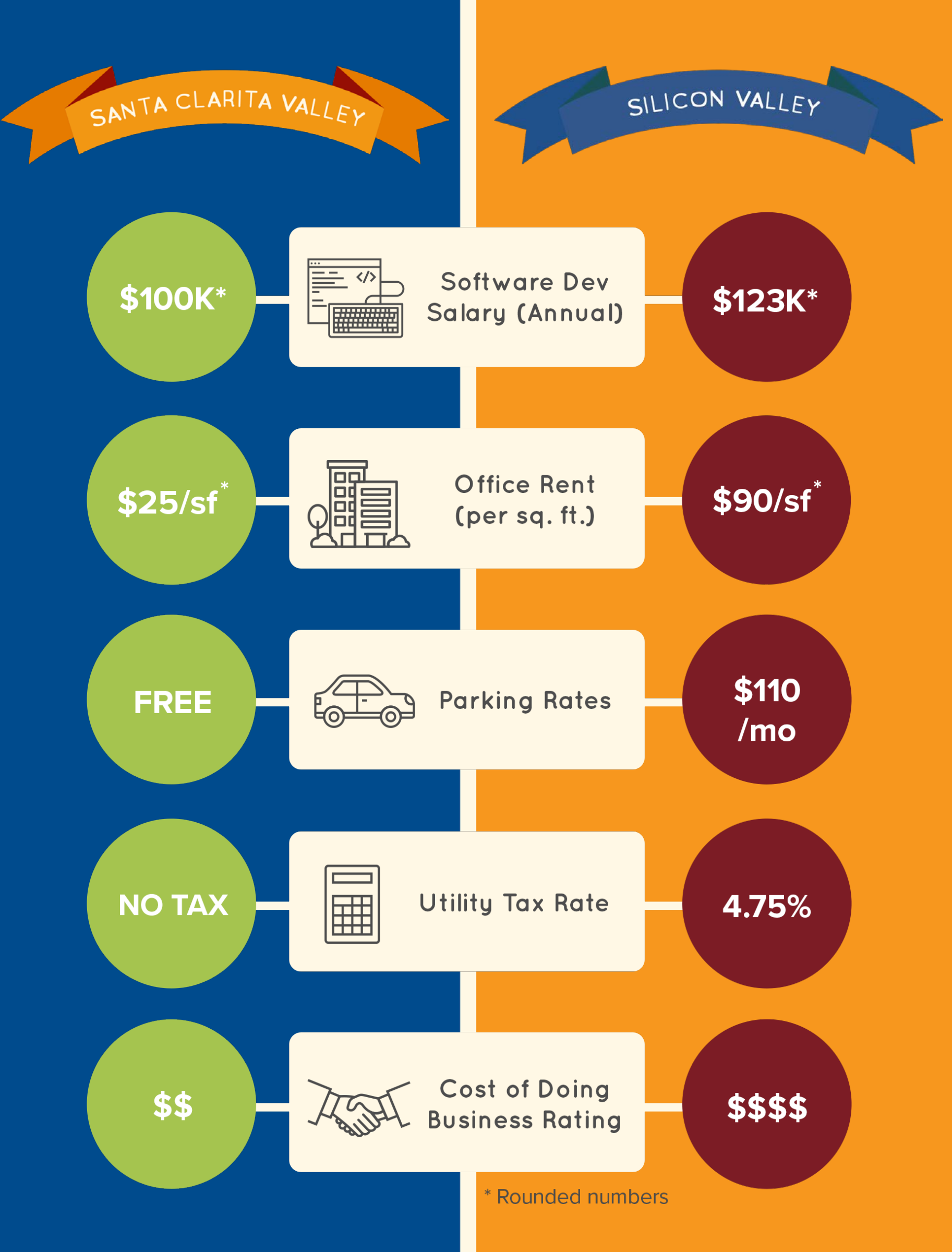
BUSINESS FRIENDLY

IMPROVE YOUR BOTTOM LINE

The Santa Clarita Valley is the low cost option for highly competitive businesses in Southern California.

With NO gross receipts tax and NO utility user taxes the SCV's pro-business climate makes it one of Los Angeles County's fastest growing hubs for technology and innovation.

Santa Clarita is Los Angeles County's most business friendly location




MAJOR INDUSTRIES

A close-up, low-angle shot of a large, metallic, curved structure, likely a component of an aircraft or spacecraft, with a blue tint.

Aerospace &
Defense

A close-up shot of a medical device, possibly a microscope or a surgical instrument, with a blue tint.

Bioscience &
Medical Devices

A close-up shot of a robotic arm in a factory setting, with a blue tint.

Advanced
Manufacturing

A close-up shot of a film set, featuring a clapperboard and a camera, with a blue tint.

Digital &
Entertainment

A close-up shot of a computer circuit board, with a blue tint.

Information
Technology

A close-up shot of a modern office building with large glass windows, with a blue tint.

Corporate HQ &
Professional Services

MAJOR INDUSTRIES

INDUSTRY CLUSTERS

The Santa Clarita Valley is home to companies in each of its target industry clusters, and each cluster is supported by an industry coalition, customized workforce training programs, and other support services. SCVEDC is dedicated to growing businesses.



AVAILABLE SPACE



DESIGNED FOR GREATNESS

The largest collection of master planned business parks and residential neighborhoods in Los Angeles County are in the SCV, and we're not finished yet!

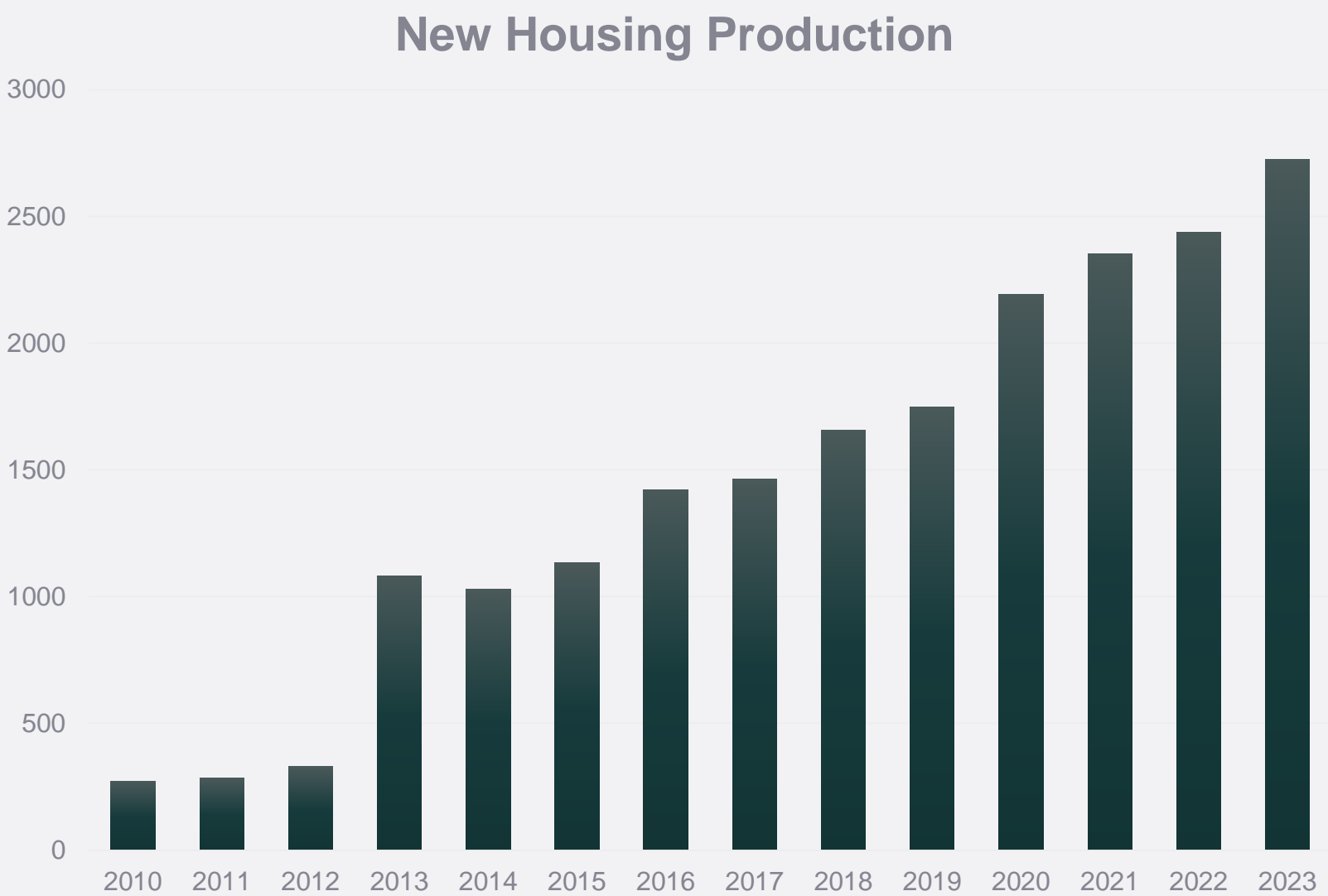
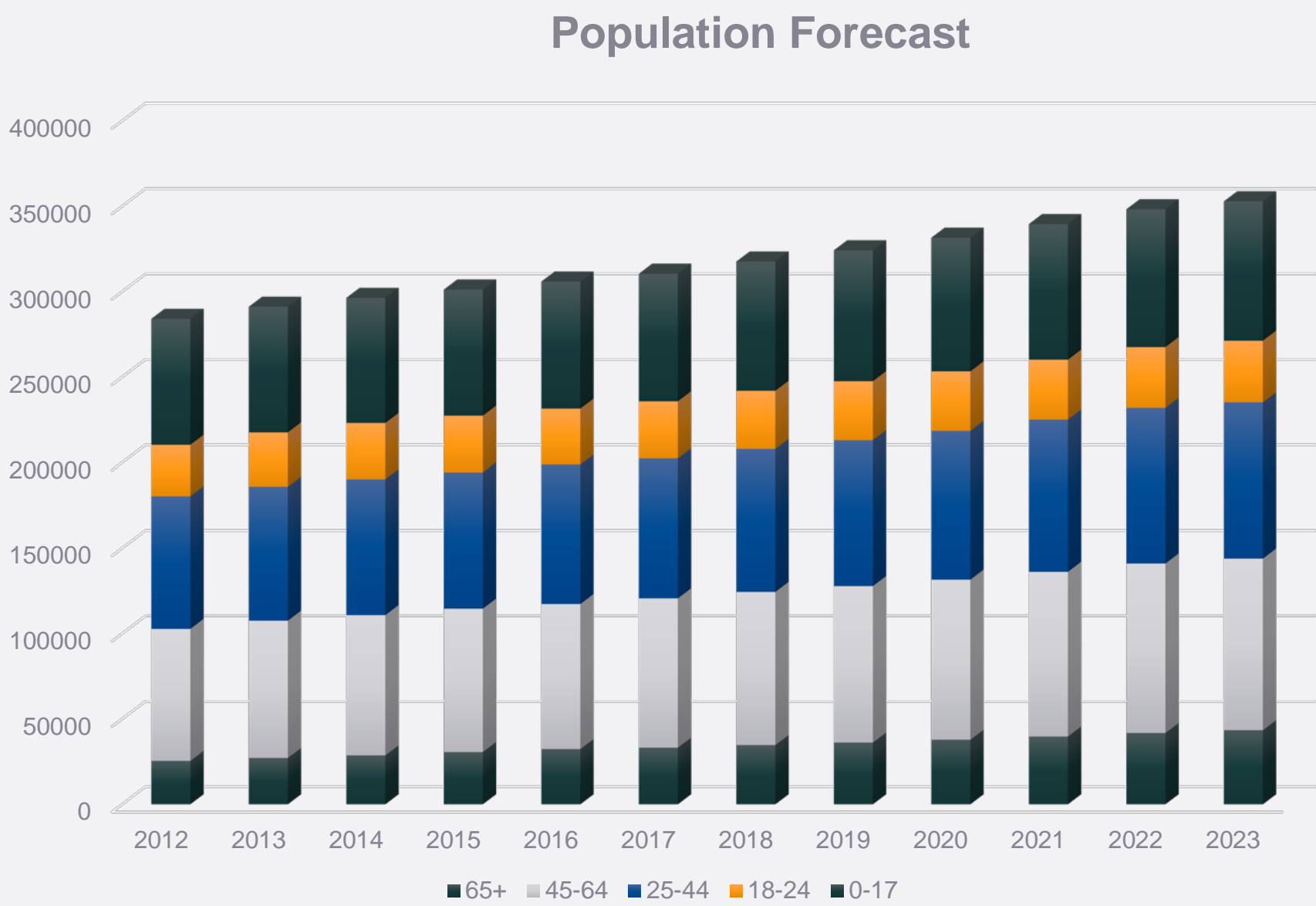
- Nearly 30M SF of industrial and commercial facilities
- 8M SF of future land development is approved
- 2M SF currently under construction
- Planned residential growth with new homes to suit a variety of budgets



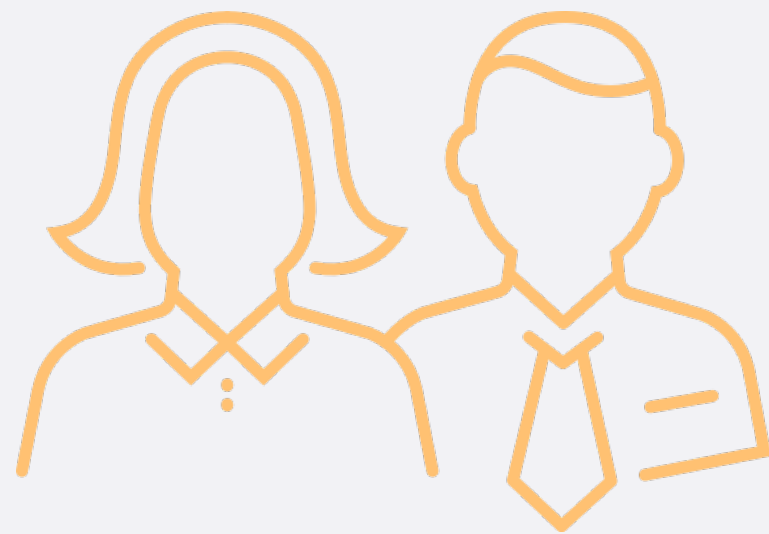
GROWING COMMUNITY

POISED FOR GROWTH

The Santa Clarita Valley is one of LA County’s fastest growing communities with an estimated population of 339,949 by 2023.



TALENT



92,228

SCV EMPLOYEED POPULATION
Of those employed in the Santa Clarita Valley, over 43% hold a professional occupation working in management, business, science or the arts.



70%

HIGH CALIBUR TALENT
More than 2/3 of our residents have completed at least some college making us one of the highest educated populations in the SoCal region.



\$104K

MEDIAN HOUSEHOLD INCOME
Median household income is one of the highest in the State of California. A high percentage of SCV's population work in high-paying fields.



TOP EMPLOYERS



QUALITY OF LIFE

SCV residents enjoy the benefits of thriving civic centers, world-class recreational facilities, top-performing schools and colleges, and impressive dining and shopping amenities. From the nearly 10,000 acres of protected open space and 80 miles of hiking and biking trails to the Six Flags Magic Mountain theme park, the Santa Clarita Valley is home to some of Southern California's best outdoor recreation spots.



Contact Us.

Santa Clarita Valley Economic Development Corporation

26455 Rockwell Canyon Road
UCEN 263
Santa Clarita, CA 91355

Phone: 661.288.4400
Email: scvedc@scvedc.org

SANTA CLARITA VALLEY
ECONOMIC DEVELOPMENT CORPORATION



Visit us at www.scvedc.org for more info!