

# WHY SCV?

Innovation Loves Company

**SANTA CLARITA VALLEY**  
ECONOMIC DEVELOPMENT CORPORATION



# AWARD WINNING

Welcome to the award-winning Santa Clarita Valley!

**Best City to Live**

**Safest & Healthiest City**

**Most Business-Friendly City**



**Largest City in  
Los Angeles County**



# GOOD LOCATION

Fulfilling the Promise of the Golden State



## STILL GOLDEN

The business-friendly Santa Clarita Valley is conveniently located next to Interstate 5 and Highway 14 and is home to the 3<sup>rd</sup> largest city in Los Angeles County, the City of Santa Clarita. The SCV is a growing area encompassing 520 square miles with a population of approximately 300,000 residents.





# GOOD LOCATION

Premier SoCal location

## SITUATED FOR SUCCESS

Just 30 miles north of downtown Los Angeles, the Santa Clarita Valley enjoys access to 23 interstate and local highways and enjoys easy access to LAX, Burbank Hollywood Airport, and the Ports of Los Angeles and Long Beach. The SCV is ideally situated to help companies grow.



# GOOD LOCATION

Home to LA County's most business-friendly city

## BUSINESS FRIENDLY

Santa Clarita is recognized as LA County's Most Business-Friendly location

## LIVE • WORK • PLAY

No other city offers such a uniquely favorable combination of factors that allow you to live, work and play right outside your doorstep



## SAFEST CITY

The City of Santa Clarita consistently ranks as one of the safest cities of its size in the nation

## CITY OF THE FUTURE

fDi Magazine recognizes the City of Santa Clarita as a “City of the Future” for foreign investment





# BUSINESS FRIENDLY

## IMPROVE YOUR BOTTOM LINE

The Santa Clarita Valley is the low cost option for highly competitive businesses in Southern California.

With NO gross receipts tax and NO utility user taxes the SCV's pro-business climate makes it one of Los Angeles County's fastest growing hubs for technology and innovation.

Santa Clarita is Los Angeles County's most business friendly location

### SANTA CLARITA VALLEY

\$100K\*



Software Dev  
Salary (Annual)

\$25/sf\*



Office Rent  
(per sq. ft.)

FREE



Parking Rates

NO TAX



Utility Tax Rate

\$\$



Cost of Doing  
Business Rating

### SILICON VALLEY

\$123K\*

\$90/sf\*

\$110  
/mo

4.75%

\$\$\$\$

\* Rounded numbers

# MAJOR INDUSTRIES

A close-up, low-angle shot of a large, metallic, curved structure, likely a component of an aircraft or spacecraft, with a blue tint.

Aerospace &  
Defense

A close-up shot of a medical device, possibly a microscope or a surgical instrument, with a blue tint.

Bioscience &  
Medical Devices

A close-up shot of a yellow robotic arm in a factory setting, with a blue tint.

Advanced  
Manufacturing

A close-up shot of a film set, featuring a clapperboard and a director's chair, with a blue tint.

Digital &  
Entertainment

A close-up shot of a computer circuit board with a blue tint.

Information  
Technology

A close-up shot of a modern office building with large glass windows, with a blue tint.

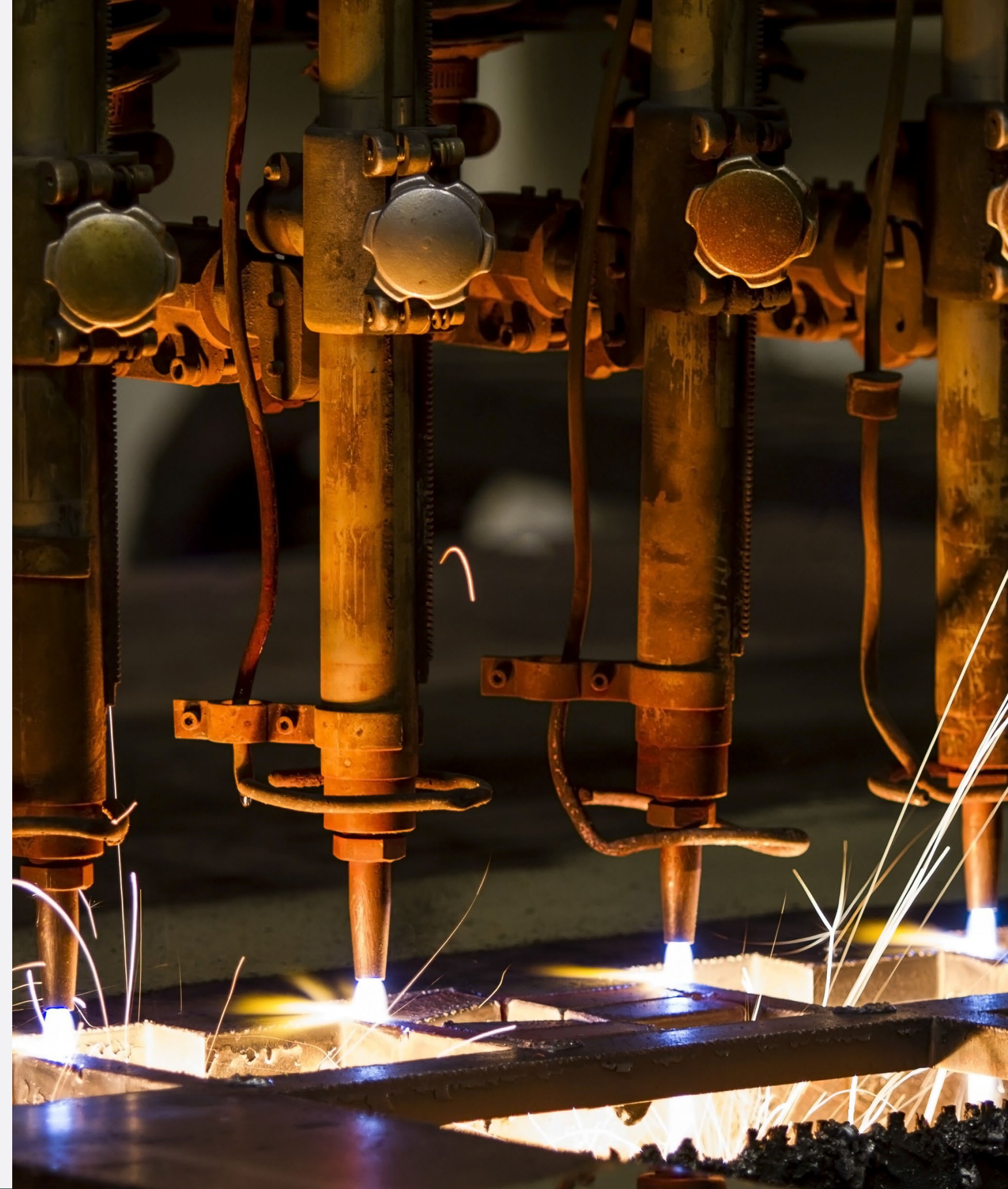
Corporate HQ &  
Professional Services



# MAJOR INDUSTRIES

## AEROSPACE & DEFENSE

The Aerospace & Defense industry involves organizations that focus on aerospace product and parts manufacturing, space research and technology and national security & international affairs. Strong political support, a highly educated workforce, unique training infrastructure and the presence of many networking and support programs make the Santa Clarita Valley an attractive location.





# MAJOR INDUSTRIES

## INDUSTRY CLUSTERS

The Santa Clarita Valley is home to companies in each of its target industry clusters, and each cluster is supported by an industry coalition, customized workforce training programs, and other support services. SCVEDC is dedicated to growing businesses.

The Aerospace & Defense Coalition (ADC) is made up of over 80 SCV aerospace and defense companies that meet quarterly in the SCV for industry promotion, information and data sharing, and peer networking.





# AVAILABLE SPACE

## POISED FOR GROWTH

The Santa Clarita Valley is one of LA County's fastest growing communities with master planned business parks and state-of-the-art facilities with the infrastructure and amenities to support them.

You'll also find mixed-use residential communities, and modern homes for you and your team.





# AVAILABLE SPACE



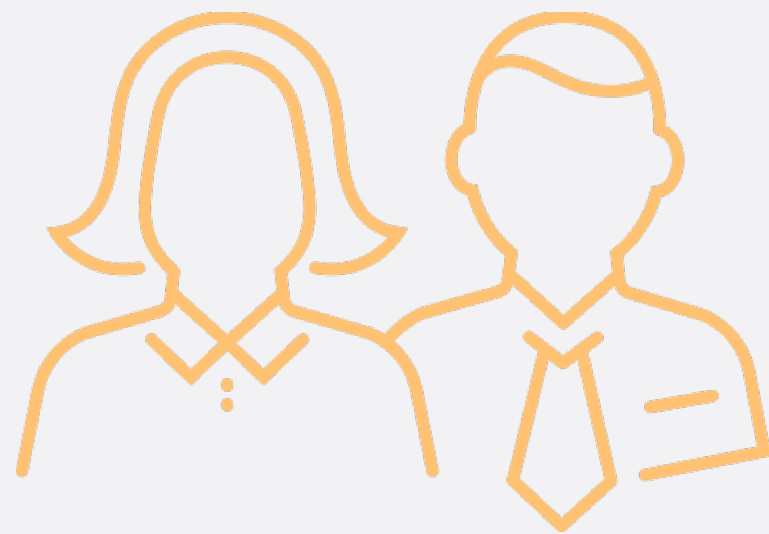
## DESIGNED FOR GREATNESS

The largest collection of master planned business parks and residential neighborhoods in Los Angeles County are in the SCV, and we're not finished yet!

- Nearly 30M SF of industrial and commercial facilities
- 8M SF of future land development is approved
- 2M SF currently under construction
- Planned residential growth with new homes to suit a variety of budgets



# TALENT



**92,228**

**SCV EMPLOYED POPULATION**  
Of those employed in the Santa Clarita Valley, over 43% hold a professional occupation working in management, business, science or the arts.



**70%**

**HIGH CALIBUR TALENT**  
More than 2/3 of our residents have completed at least some college making us one of the highest educated populations in the SoCal region.



**\$104K**

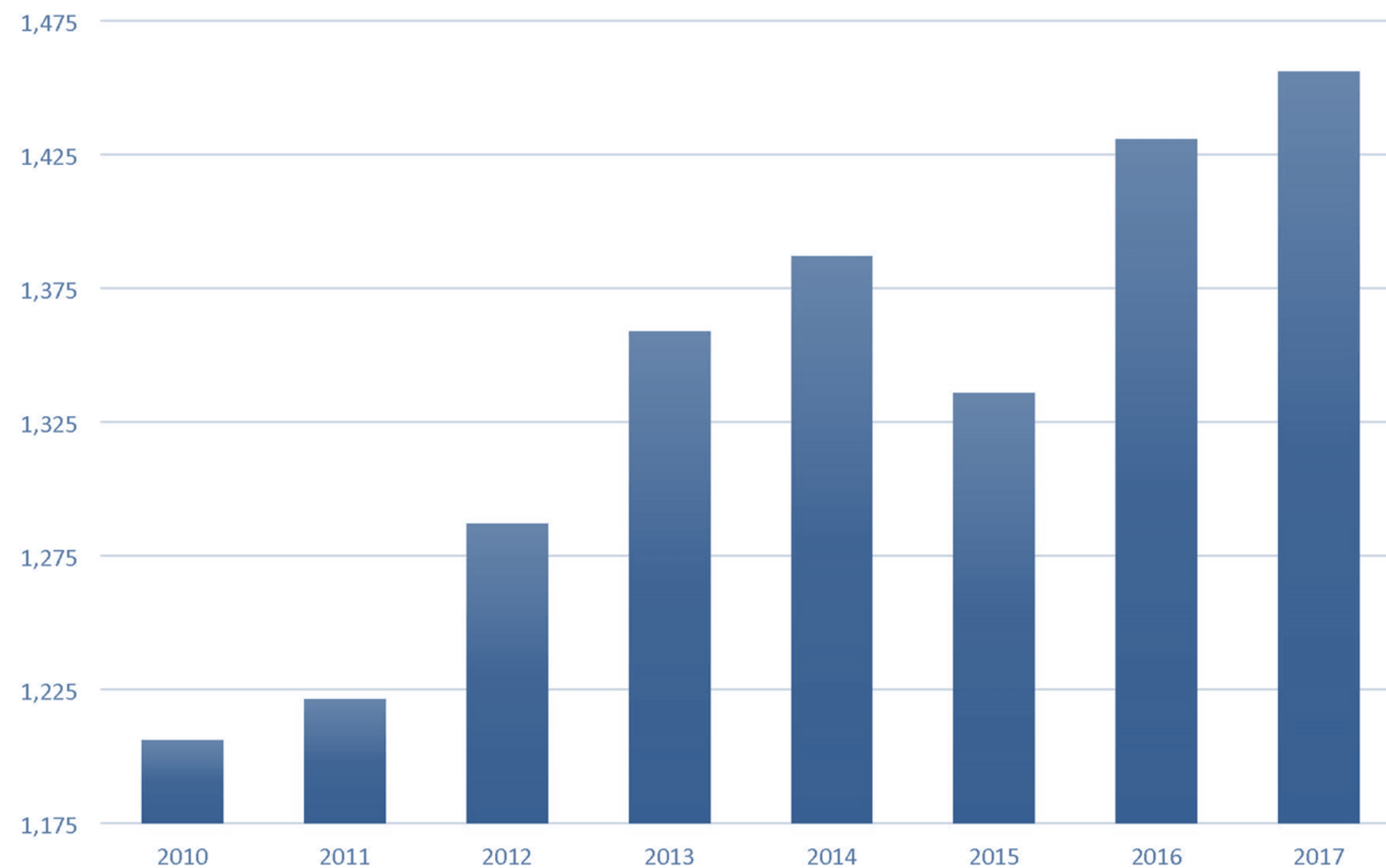
**MEDIAN HOUSEHOLD INCOME**  
Median household income is one of the highest in the State of California. A high percentage of SCV's population work in high-paying fields.





# TALENT

Employment in Aerospace and Defense



## \$89,000

Average salary per worker

## 11.3%

Of all SCV jobs in the SCV are in the advanced manufacturing\* sector

\*includes aerospace & defense

## Industry Coalition

Supported by Aerospace & Defense Forum monthly meetings





# TOP EMPLOYERS



ITT





# QUALITY OF LIFE

---

SCV residents enjoy the benefits of thriving civic centers, world-class recreational facilities, top-performing schools and colleges, and impressive dining and shopping amenities. From the nearly 10,000 acres of protected open space and 80 miles of hiking and biking trails to the Six Flags Magic Mountain theme park, the Santa Clarita Valley is home to some of Southern California's best outdoor recreation spots.



# Contact Us.

## Santa Clarita Valley Economic Development Corporation

26455 Rockwell Canyon Road  
UCEN 263  
Santa Clarita, CA 91355

**Phone:** 661.288.4400  
**Email:** [scvedc@scvedc.org](mailto:scvedc@scvedc.org)

**SANTA CLARITA VALLEY**  
ECONOMIC DEVELOPMENT CORPORATION



Visit us at [www.scvedc.org](http://www.scvedc.org) for more info!